

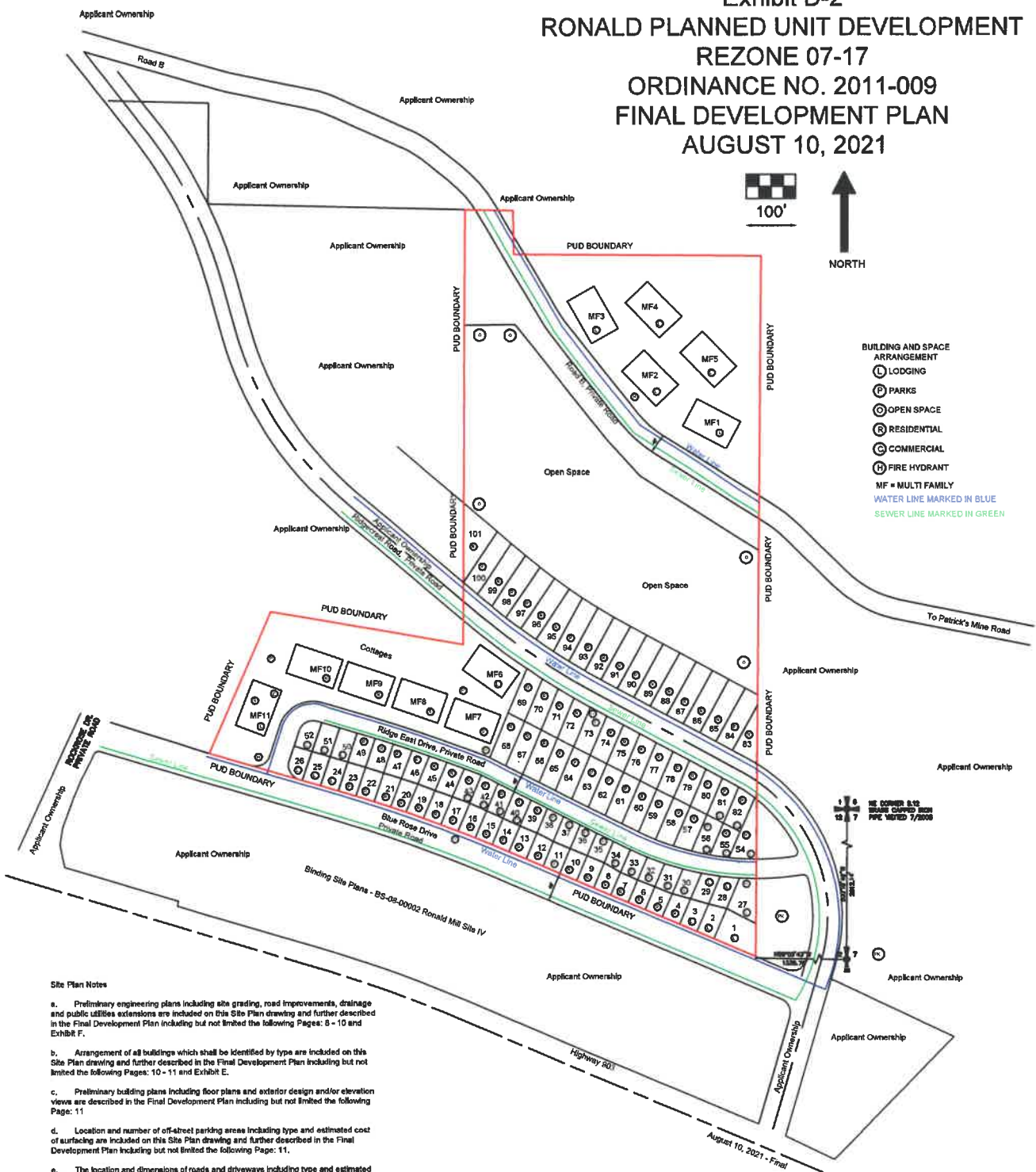
**Ronald Planned Unit Development
Exhibit D 2**

**Final Development Plan
Ronald PUD Site Plan
Conceptual Layout and Utilities
Follows This Exhibit Title Sheet**

RECEIVED
AUG 19 2021

Kittitas County CDS

Exhibit D-2
RONALD PLANNED UNIT DEVELOPMENT
REZONE 07-17
ORDINANCE NO. 2011-009
FINAL DEVELOPMENT PLAN
AUGUST 10, 2021



Site Plan Notes

- a. Preliminary engineering plans including site grading, road improvements, drainage and public utilities extensions are included on this Site Plan drawing and further described in the Final Development Plan including but not limited the following Pages: 8 - 10 and Exhibit F.
- b. Arrangement of all buildings which shall be identified by type are included on this Site Plan drawing and further described in the Final Development Plan including but not limited the following Pages: 10 - 11 and Exhibit E.
- c. Preliminary building plans including floor plans and exterior design and/or elevation views are described in the Final Development Plan including but not limited the following Page: 11
- d. Location and number of off-street parking areas including type and estimated cost of surfacing are included on this Site Plan drawing and further described in the Final Development Plan including but not limited the following Page: 11.
- e. The location and dimensions of roads and driveways including type and estimated cost of surfacing and road maintenance plans are included on this Site Plan drawing and further described in the Final Development Plan including but not limited the following Pages: 12 and Exhibit F.
- f. The location and total area of common open spaces are included on this Site Plan drawing and further described in the Final Development Plan including but not limited the following Page: 12.
- g. Proposed location of fire protection facilities are included on this Site Plan drawing and further described in the Final Development Plan including but not limited the following Page: 13.
- h. Proposed utility plan is included on this Site Plan and further described in the Final Development Plan including but not limited the following Page: 13. Dry Utilities are in the same ditch as the water line. This project is not served by gas.